



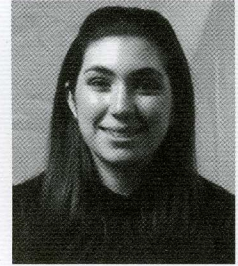
Charles and Lynn Schusterman
International Center

Arthur and Rochelle Belfer Building
800 Eighth Street, NW
Washington, DC 20001-3724
T: 202.449.6500 • F: 202.449.6600
info@hillel.org • www.hillel.org

July 2009

Dear Moshe,

Last spring, I was selected as the 2008-2009 Bronfman Fellow at Hillel's Schusterman International Center. I spent the past year working closely with President Wayne L. Firestone and Hillel's International Division, and I had the privilege of seeing your dollars at work. As my fellowship comes to an end, I want to say **thank you**.



Jamie Silverstein
2008-2009 Bronfman Fellow

My Jewish journey began as a college undergraduate in the summer of 2006, when I was the first person in my entire family to visit Israel. Like thousands of other Jewish students, I didn't realize at the time that my participation in a **Taglit-Birthright Israel: Hillel trip would alter the course of my life . . . and my career**.

I returned from Israel eager to share my newly-discovered passion for Judaism with my peers. During my final semester at University of Florida, I interned full-time for Hillel, where I had the rewarding job of introducing new students to Jewish life just as Hillel had introduced me. My path became clear: I decided to begin my career within the Jewish community.

In my role at Hillel's Schusterman International Center, I witnessed the far-reaching impact of your support. Last summer, I attended Hillel's Engagement Institute, which **empowered students to engage their own network of friends in Jewish life**. Thank you for enabling this training, as peers are often the most powerful way to initiate involvement. In January, I led a group of students on an Alternative Break to New Orleans, where they **experienced Jewish values in ways that are relevant to them**, such as social activism and volunteerism. Thank you for supporting Hillel's Tzedek (justice) programs. Over the course of the year, I also created Hillel's Global Campus Initiative, an enrichment opportunity that **connects students studying abroad to their new Jewish communities** through Shabbat, holiday celebrations and local Jewish heritage tours. Thank you for making this international initiative possible.

My Bronfman Fellowship strengthened my commitment to the Jewish community and led me to continue my career as the Director of Engagement at Hillel at The George Washington University. (I begin work this month!) Recent Tufts University graduate **Nathan Render** will take over where I leave off at the Schusterman International Center. Given his background as co-founder of an Interfaith Initiative called Pathways, I know he will make a strong impact.

Not every student will follow our paths, but I am confident that the students who are touched by Hillel will make an enduring commitment to Jewish life, including the 75,000 freshmen who will arrive on campuses this summer.

With great appreciation,

Jamie Silverstein

P.S. You can read more about Nathan's Hillel story and follow his experiences in his new role by visiting www.hillel.org/BronfmanFellow



THE FOUNDATION FOR JEWISH CAMPUS LIFE